

Prestige 3D is a family of three compartment trunking from MK Electric, which satisfies the growing demands of cable management installations, as well as providing greater trunking depth to cater for Cat 5e, 6 and 7 structured cabling. Prestige 3D is rich in unique features offering up to 40% faster installation time compared to Prestige Plus, greater cabling capacity and improved aesthetics.



PRESTIGE 3D DADO AND SKIRTING

PRESTIGE 3D ANTIBAC BLUE

PRESTIGE 3D COMPACT

PRESTIGE 3D ALUMINIUM

Prestige 3D Dado and Skirting

Prestige 3D Dado and Skirting offers a comprehensive range of Cat 5e, 6 and 7 compliant full 3 compartment trunking with maximum cable capacity.

Prestige 3D Antibac Blue

Prestige 3D Antibac Blue offers an antibacterial cable management solution for power and data distribution in environments where hygiene is a priority. Prestige 3D Antibac Blue is designed to kill bacteria which can grow on surfaces such as trunking systems. It uses a silver based additive inherent within the PVCu which acts as an effective weapon in fighting harmful bacteria such as MRSA. Independent laboratory tests show kill rate of >99.9% over a 24 hour period for MRSA, and Klebsiella pneumoniae.

Prestige 3D Compact

Prestige 3D Compact is a Dado system which has a smaller footprint and offers a solution where space is restricted such as above radiators and below window sills. Cables are run in the top and bottom compartments allowing the full depth of the centre compartment for termination to devices. The Compact range is a lower price alternative especially if there are low quantities of cable to manage.

Prestige 3D Aluminium

New to the Prestige 3D family, this 3 compartment Dado and Skirting satisfies the needs of a Cat 5e, 6 and 7 compliant trunking system. With pre-drilled bases and hinged lids this system is suitable for commercial offices, educational facilities and laboratories.

- **Fully Cat 5e, 6 and 7 compliant**
- **Unique design features provide 40%* faster installation time**
- **Patented Data Sweep maximises cable capacity without the need for bulbous corners**
- **Improved aesthetics with single piece covers**
- **All PVC extrusions manufactured from 90% recycled materials****
- **10 Year guarantee**

* Independently verified as 40% faster to install than Prestige Plus

** Based on 2008 consumption

technical hotline +44 (0)1268 563720

perimeter and distribution | cable management



range introduction

features and benefits

Prestige 3D Dado and Skirting offers a comprehensive range of Cat 5e, 6 and 7 compliant compartment trunking with maximum cable capacity.

Prestige 3D meets both the demands for easier and faster installation while maintaining high aesthetics.

- **Faster installation – 40% quicker than Prestige Plus**
- **Cat 5e, 6 and 7 compliant flexible Internal and External Corners, moulded Flat Angles and Tees**
- **Unique 'open box' mounting frames combined with divider knockouts to provide unhindered tool-free cable entry**
- **Innovative External Corner Data Sweep allows continuous cable capacity and maintains the minimum trunking depth**
- **Hinged lid to support cables during installation**
- **Pre-punched bases**
- **Curved outer covers that complement MK Logic Plus accessories**
- **All extrusions manufactured from 90% recycled material***
- **10 Year guarantee**

* based on 2008 consumption

END CAPS

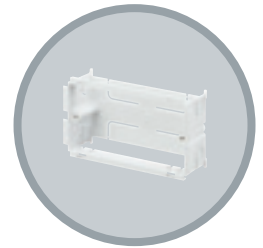
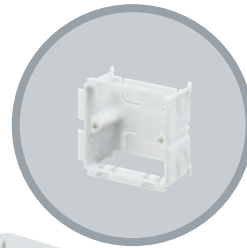
Neatly finishes runs of trunking. (Moulding provides internal location for extra security from optional screw fixing).

**DIVIDER KNOCKOUTS**

Wiring is also made easy with 50 x 21mm knockouts at 100mm intervals along compartment dividers, providing instant access to mounting boxes, with no drilling or cutting.

**BACK BOXES**

The 1 and 2 gang 35mm and 45mm deep back boxes, 3 gang 45mm deep back box and 1 and 2 gang 40mm frames ensure Cat 5e, 6 and 7 compliance and ease of connection to power and data devices. The open top/bottom allows unhindered tool free cable entry, through the trunking compartment divider knockout. The back box can slide to align with appropriate knockout (see technical pages for restrictions on use).

**PRE-PUNCHED BASES**

Wall fixing is simplified by the inclusion of pre-punched oval holes at 100mm intervals, ensures no drilling is required.

**INTERNAL CORNER**

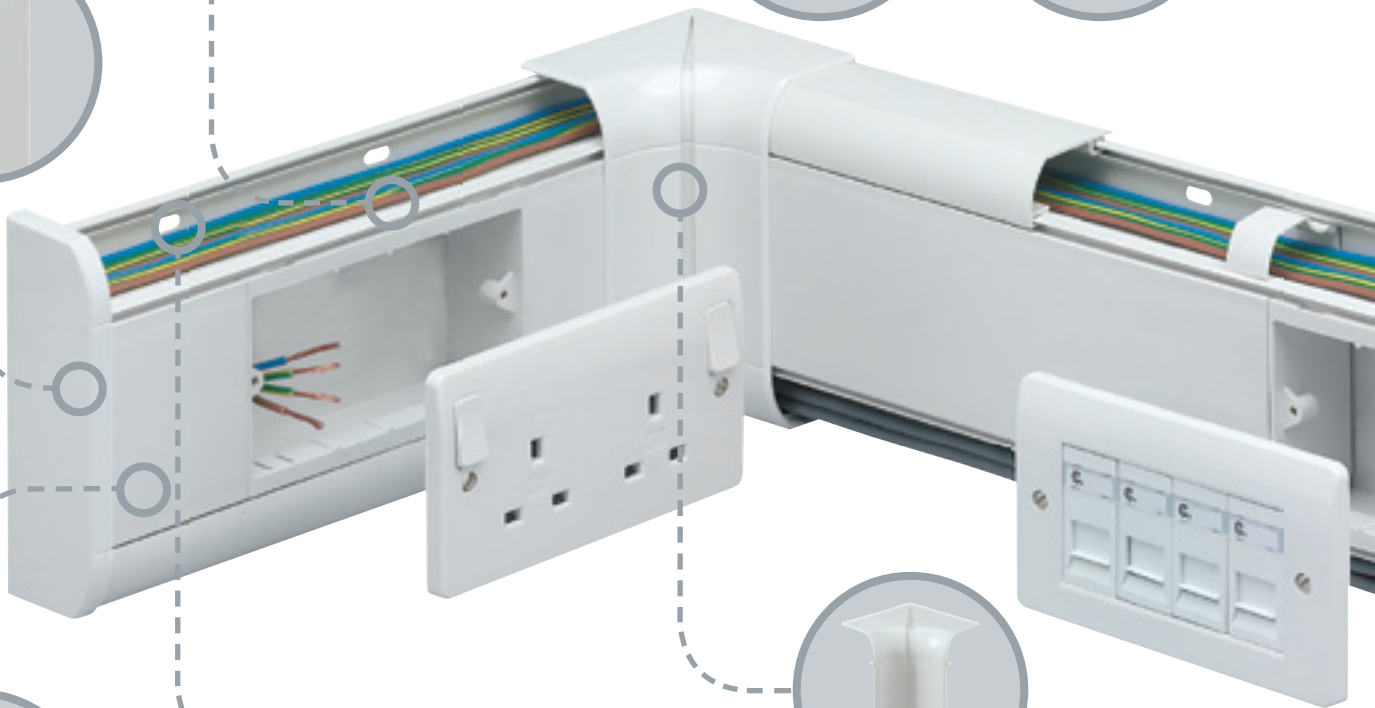
Designed to accommodate irregularities in the squareness of the corner with a +/- 5 degrees flexibility range. The centre split gives maximum adjustment. Covers are radiused and compatible with Cat 5e, 6 and 7 data cabling requirements.

PART M

Compliance to Part M building regulations can be achieved using Part M flange, charcoal devices or charcoal straight cover.

**SCREW FIXING KIT**

Where higher security is required, e.g. schools, all fitting covers can be secured using the Screw Fixing Kit. The Screw Fixing Kit is self-locating on the styling line of the system and has a cover to hide the screw head.



technical hotline +44 (0)1268 563720

perimeter and distribution | cable management

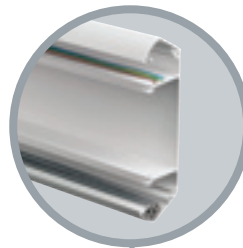
FLAT TEES AND ANGLES

The ingenuity of the patented tee design allows a variety of cable drop permutations. The tee's bridge can be fitted in two positions increasing the versatility of cable runs whilst maintaining the correct segregation and Cat 5e, 6 and 7 compliance. Screw fixing hole locations have a protective shroud to prevent the chafing of cables. Both the Flat Angle and Tee compartment divider walls are curved (Cat 5e, 6 and 7 compliant) to allow data cables to lay in with no loss of capacity. The covers are one piece and clip securely into place, and the base is also a single moulded item, giving more strength than fabrication. Joint covers are not required where the tee/angle meets the trunking as the moulded covers now overlap the junction.



ELECTROMAGNETIC INTERFERENCE

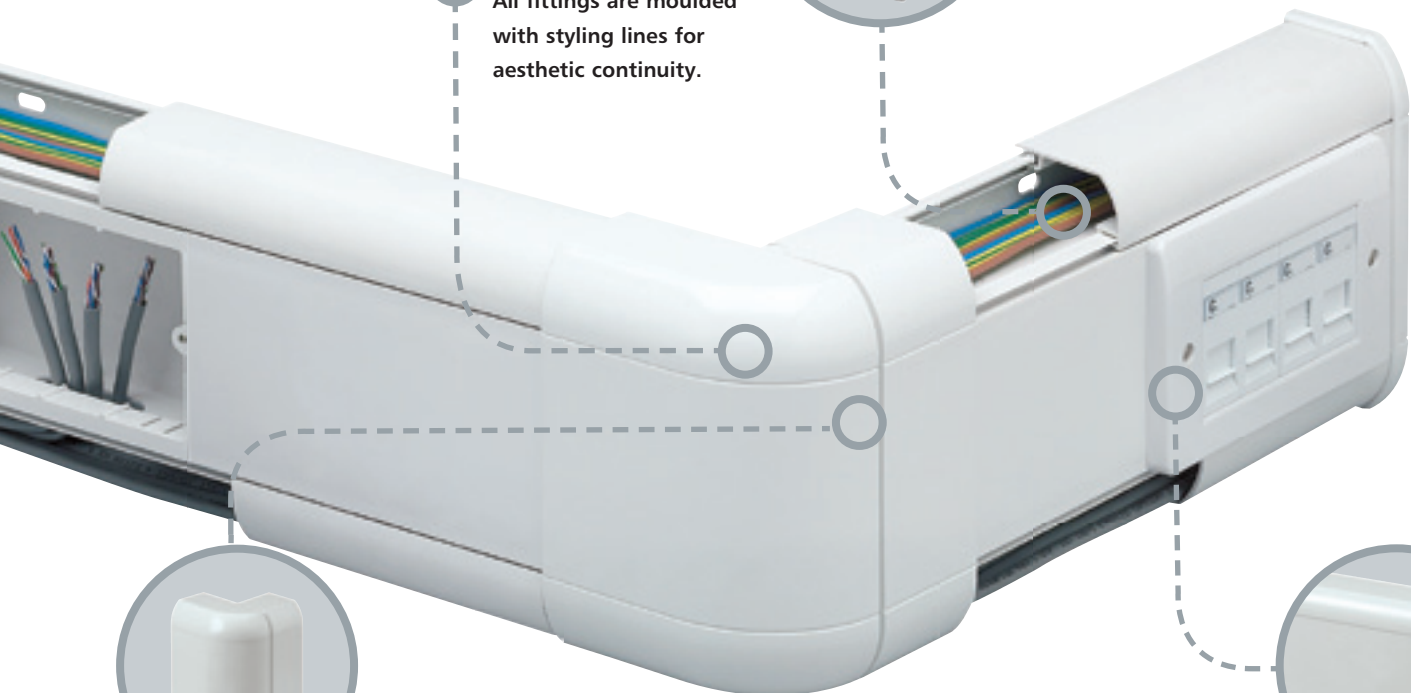
Additional data cable/signal protection is provided by fitting screening divider VP30.



TRUNKING HINGE LIDS

A two stage location gives a hinge effect, enabling cables to be supported by the trunking cover during the installation. Cover design avoids dust traps and makes cleaning easier, and continues the aesthetics of the trunking.

STYLING LINES
All fittings are moulded with styling lines for aesthetic continuity.



EXTERNAL CORNER

External Corners accommodate +/- 5 degree irregularities in the squareness of a corner. Corners come ready assembled to click into place, and offset side splits hide the effect of the split line for aesthetics.

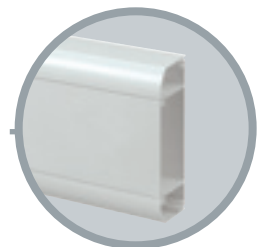
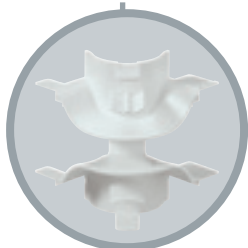
DATA SWEEP

The unique patented Data Sweep provides Cat 5e, 6 and 7 data cabling compliance, with no loss of capacity and without the need for bulky, protruding corner covers.

CHOICE OF TWO PROFILES

Available in Dado and Skirting profiles to suit most installations.

Available in white, charcoal and choice of RAL colours*.



Component
Selector
Chart

PROFILE LENGTHS

Main
Carrier

Straight
Cover

Curved
Cover

Square
Cover

FITTINGS

Flexible
Internal
Corner

3 METRES

6m

3 METRES

30m

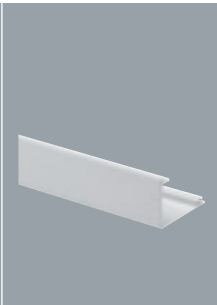
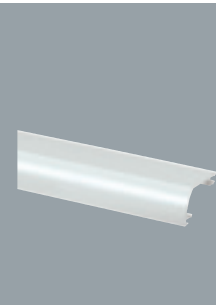
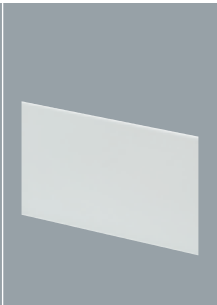
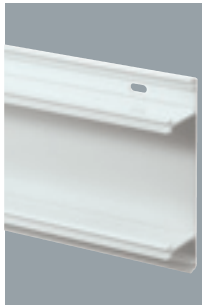
3 METRES

30m

3 METRES

30m

2



VP180WHI
VP180CHA

VP100WHI
VP100CHA*

VP110WHI x2
VP110CHA x2

VP181WHI
VP181CHA



VP180WHI
VP180CHA

VP100WHI
VP100CHA*

VP110WHI
VP110CHA

VP115WHI
VP115CHA

VP191WHI
VP191CHA

* Use Charcoal lid to help achieve compliance to Part M

technical hotline +44 (0)1268 563720

perimeter and distribution | cable management

Flexible External Corner

CONSISTS OF COVER AND DATA SWEEP

2

End Cap

SUPPLIED AS LEFT AND RIGHT-HAND PAIR

1

Joint Cover

5

Flat Angle

CONSISTS OF COVER AND CARRIER

1

Flat Tee

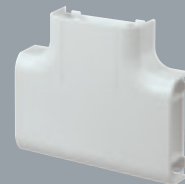
CONSISTS OF COVER AND CARRIER

1

Adaptor

SUITABLE FOR 20 AND 25MM CONDUIT AND YT2 AND YT4 MINI-TRUNKING

10



VP182WHI
VP182CHA

VP183WHI
VP183CHA

VP184WHI
VP184CHA

VP185WHI
VP185CHA

VP187WHI
VP187CHA

VP188WHI
VP188CHA

VP192WHI
VP192CHA

VP193WHI
VP193CHA

VP194WHI
VP194CHA

Flat Angle Up
VP195WHI
VP195CHA

Flat Angle Down
VP196WHI**
VP196CHA**

VP197WHI
VP197CHA

VP198WHI
VP198CHA

ACCESSORIES

Socket Spacer



VP129WHI 50
VP129CHA 50
 SOCKET SACER 25MM WIDE
 Visible width is 9mm after installation.

Part M Flange and Socket Spacer



VX40CHA 20
VX40BLU 20
 1 GANG MOUNTING FLANGE
VX41CHA 10
VX41BLU 10
 2 GANG SOCKET SPACER

Provides colour contrast with wiring device to comply with Part M.
 Visible width is 25mm after installation.

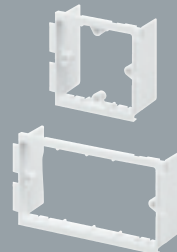
Open Back Boxes



VP121WHI* 25
VP121CHA* 25
VP124WHI** 25
VP124CHA** 25
 1 GANG OPEN BACK BOX
VP122WHI* 10
VP122CHA* 10
VP125WHI** 10
VP125CHA** 10
 2 GANG OPEN BACK BOX
VP123WHI* 5
VP123CHA* 5
 3 GANG OPEN BACK BOX

*45mm deep
 **35mm deep

Open Mounting Frames*



VP131WHI 25
VP131CHA 25
 1 GANG 40MM OPEN MOUNTING FRAME
VP132WHI 10
VP132CHA 10
 2 GANG 40MM OPEN MOUNTING FRAME
 1 Gang frame is used in vertical applications.
 Wings may be removed for greater wiring space.
 *Open mounting frames are only suitable where services running in the centre compartment are the same as that of the accessory.

MCB/RCD Housing



VP35WHI 1
 MCB/RCD HOUSING WITH COVER (ACCESSORY NOT SUPPLIED)
 Mounts directly to central compartment of trunking to accept up to 2 x one module products from the Sentry range of MCBs and RCDs (excluding one module RCBOs).

Cable Retainer



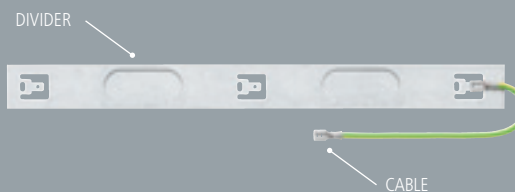
VP105WHI 50
 CABLE RETAINER

Screw Fixing Kit



VTS1000 20
 SCREW FIXING KIT

Screening Divider



VP30** 15m
 1.5M SCREENING DIVIDER

VX31 10
 300MM SCREEN CONNECTING CABLE

VX32 10
 500MM SCREEN CONNECTING BRAID

VX33 10
 500MM SCREEN CONNECTING CABLE

** Cable not included