

Everon® Copper Datacom KS500U Unshielded Jack Cat.6A, Keystone, pack of 24

CORNING

Part Number:
KAXKSM-00104-C001-BP

The KS500U Keystone jack is an easy to assemble RJ45 jack for all applications, that does not require any special tools. The versatile KS500U supports both LAN and data centre applications with maximum performance and is therefore suitable for all current applications such as 10GBase-T.

The 3-way cable entry and standard Keystone dimensions support space-saving installations, e.g. in a surface-mount box with low installation depth, as well as in a 48-port patch panel in just 1U. The integrated self-closing dust shutter prevents dirt from entering the contact surfaces at any time. The jack is backwards compatible and supports RJ11/RJ12 connectors. The IDC design allows the use of only one jack to accommodate 4-pair AWG 22-26 solid conductors or AWG26/27 stranded conductors for T568A or T568B.

Strain relief is provided by the housing bracket of the jack or optionally by an additional clip using a cable tie.

The jack complies with Cat.6A component performance according to ISO/IEC and supports 4PPoE according to IEEE 802.3bt.

Features and Benefits

Integrated self-closing dust shutter

No additional dust shutters required for faceplates. Captive dust protection of the IDC contacts for fail-safe connectivity

3-way cable entry

Three cable entry points (70°, 180° straight and 250°) for space and flexibility, ensuring cable minimum bend radius is not compromised

One jack accommodates solid and stranded conductors

Suitable for AWG 22-26 solid or AWG26/27 stranded wires

Protection against crosstalk

Alien X-talk analyses and transmission performance for unshielded Class EA (subscriber). Alien X-talk analyses and transmission performance for unshielded Class E (subscriber)

Easy installation

No special tools required, reduces installation time

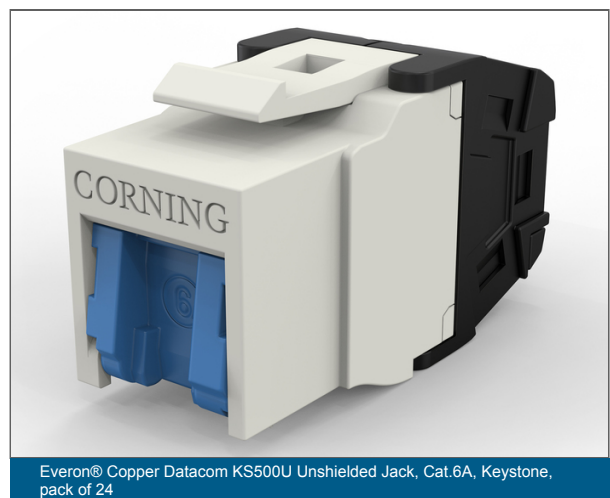
Supports high port density with options to configure 48 ports in a 1U or 24 ports in a 1/2U panel

Minimizes the need for excessive hardware, optimizes space and efficiency

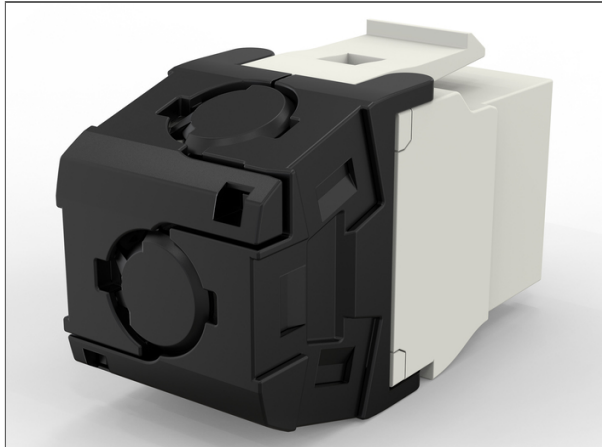
Eco-friendly bulk packs

Reduced packaging and weight

Tested and approved for Power over Ethernet applications (PoE/PoE+/4PPoE) according to IEEE 802.3af, IEEE 802.3at and IEC 802.3bt up to 90W



Everon® Copper Datacom KS500U Unshielded Jack Cat.6A, Keystone, pack of 24



Everon® Copper Datacom KS500U Unshielded Jack, Cat.6A, Keystone, pack of 24

Specifications

General Specifications	
Dust protection	Yes
Category	6A
Application	10GBase-T
Bandwidth	500 MHz

Standards	
Flame retardance	Class UL94 V-0
RoHS	Free of hazardous substances according to RoHS 2011/65/EU
Transmission performance link	Channel and permanent link class EA according to ISO/IEC 11801 (latest edition) and EN50173 (latest edition), 10 Gigabit Ethernet according to IEEE 802.3an, Transmission of analog and digital voice, image and data signals up to 500 MHz and 10 GBit/s

Everon® Copper Datacom KS500U Unshielded Jack Cat.6A, Keystone, pack of 24



Standards	
Design And Test Criteria	Tested and approved for Power over Ethernet applications (PoE/PoE+/4PPoE) according to IEEE 802.3af, IEEE 802.3at and IEEE 802.3bt up to 90W, Type 4 Class 8 Component certificate Category 6A according to ISO/IEC 11801 and IEC60603-7-51
Component Standard	Cat. 6A (subscript) according to component standard IEC 60603-51, ISO/IEC 11801 (latest edition), EN50173 (latest edition) and TIA/EIA

Environmental Conditions	
Environmental compatibility	Recyclable and free of heavy metal
Halogen-free	Yes
Temperature range, installation	-40 °C to 70 °C
Temperature range, operation	-10 °C to 60 °C

Design	
Jack Type	RJ45 - 8/8
Number of Pieces	2
Housing material	Plastic
Housing colour	White
Cable entry type	Three variable cable inputs (180° straight, 250° and 70°)
Wire Conductor+Insulation diameter max.	1.6 mm
Cable diameter	9 mm
Conductor	AWG 22-26 solid conductors or AWG 26 - 27 stranded conductors

Mechanical Specifications	
Durability of RJ45 Jack (PoE)	≥ 750 mating cycles under load (52 volt, 860 mA, 90 watt) in compliance with technical transmission parameters
Durability of RJ45 Jack	≥ 750 mating cycles possible, EN 186000-1, test 4.5.32
Contact surface	Gold pad in contact area

Everon® Copper Datacom KS500U Unshielded Jack Cat.6A, Keystone, pack of 24

CORNING

Mechanical Specifications

Reproducibility	Several times reusable
Solid Wire Diameter	1 mm to 1.6 mm

Electrical Specifications

Input to output DC Resistance Unbalance	< 0.05 MΩ
Input to output DC Resistance	< 0.2 MΩ
Electric strength DC (conductor/conductor)	1 kV / 1min (wire-wire, Adjacent Contacts)
Insulation resistance	500 MΩ
Voltage Rating (Maximum)	<75

Dimensions

Height	19.6 mm
Width	14.5 mm
Depth	37 mm

Ordering Information

Product Number	KAXKSM-00104-C001-BP
Units per delivery	24/1



Corning Optical Communications GmbH & Co. KG • Leipziger Strasse 121 • 10117 Berlin, Germany
+00 800 2675 4641 • FAX: • www.corning.com/opcomm/emea

A complete listing of the trademarks of Corning Optical Communications is available at www.corning.com/opcomm/emea/trademarks. Corning Optical Communications is ISO 9001 and ISO 14001 certified. © 2025 Corning Optical Communications. All rights reserved.