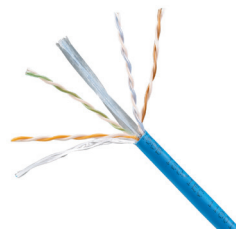


TX6™ Category 6 LSZH UTP Copper Cable for EMEA

specifications

Category 6 UTP cable shall meet ANSI/TIA-568-C.2 and IEC 61156-5 Category 6 component standards. The conductors shall be 24 AWG copper insulated with PE polymer. The copper conductors shall be twisted in pairs, separated by a cross divider and covered by a low smoke zero halogen jacket.



technical information

Electrical performance:	Certified performance in a 4-conductor configuration up to 100 meters, meets ANSI/TIA-568-C.2, ISO 11801 2nd Edition Class E and IEC 61156-5 Category 6 channel and component requirements
Cable diameter:	5.3mm (0.209 in.) nominal
Conductors/insulators:	24 AWG solid copper insulated with PE
Insulation diameter:	.925mm - .965mm (.036 in. - .038 in.)
Flame rating:	LSZH – IEC 60332-1, IEC 60754-2, IEC 61034 EN50575: Euro Class Eca
PoE compliant:	Meets IEEE 802.3af and IEEE 802.3at for PoE applications
Installation tension:	110N (25 lbf) maximum
Temperature rating:	0° to 50°C (32° to 122°F) during installation -20° to 60°C (-4° to 140°F) during operation
Cable jacket:	LSZH – Low Smoke Zero Halogen
Cable weight:	11 kg/305m (24.3 lbs./1000 ft.); 18 kg/500m (40 lbs./1640 ft.)
Packaging:	305m (1000 ft.) easy-pay-out box ¹ ; 500m (1640 ft.) on a reel ² Package tested to ISTA procedure 1A

key features and benefits

Third party tested	Cable has been tested as part of the TX6™ Category 6 UTP Copper Cabling System by an independent laboratory and complies with the electrical component and channel requirements of the following standards: ANSI/TIA-568-C.2 Category 6 and ISO 11801 2nd Edition Class E
Descending length cable markings	Easy identification of remaining cable reduces installation time and cable scrap
Cross divider	Separates twisted pairs for robust cable performance
Round cable design	Improves fill capacity, cable management, reduces required bend radius and allows efficient use of pathways and spaces
Tested beyond the standards	Cable has been characterized to 350 MHz, 100 MHz above the standard
Easy payout packaging	Ensures proper performance and provides quick installation

applications

TX6™ UTP Copper Cable is a component of the Panduit® TX6™ UTP Copper Cabling System. Interoperable and backward compatible, this end-to-end system provides design flexibility to protect network investments well into the future. With certified performance to the ANSI/TIA-568-C.2 Category 6 and ISO 11801 Class E standards,

this system will support the following applications:

- Ethernet 10BASE-T, 100BASE-T (Fast Ethernet), 1000BASE-T (Gigabit Ethernet)
- 155 Mb/s ATM, 622 Mb/s ATM, 1.2 Gb/s ATM
- Token ring 4/16

PANDUIT®

SPECIFICATION SHEET

TX6™ UTP Copper Cabling System

TX6™ UTP Copper Cable

LSZH:	PUL6C04*-KE ¹
LSZH:	PUL6C04*-KED ²

Mini-Com® TX6™ PLUS UTP Jack Module

Jack module:	CJ688TGIW**
---------------------	-------------

TX6™ PLUS UTP Patch Cords – LSZH

Foot lengths:	UTPSPL3^Y
Meter lengths:	UTPSPL^M1MY

DP6™ PLUS Punchdown Patch Panels

24-port, 1RU	
Angled:	DPA24688TGY
48-port, 1 RU	
Angled:	DPA48688TGY
24-port, 1 RU, Flat:	DP24688TGY
48-port, 2 RU, Flat:	DP48688TGY

Mini-Com® Flush Mount Modular Patch Panels

24-port, 1 RU,	
Angled:	CPPA24FMWBLY
48-port, 2 RU,	
Angled:	CPPA48FMWBLY
24-port, 1 RU, Flat:	CPP24FMWBLY
48-port, 2 RU, Flat:	CPP48FMWBLY

Termination and Cable Prep Tools

Termination tools:	EGJT or TGJT
Conductor stripping tool:	CWST
Conductor stripping tool:	CJAST

*For standard cable colors other than BU (Blue), replace BU in part number with WH (White). Contact Customer Service for regional availability and additional color options.

¹305m reel (30 boxes per pallet)

²500m reel (32 reels per pallet)

**For standard colors other than Off White (IW), replace suffix with EI (Electrical Ivory), IG (International Gray), AW (Arctic White), WH (White), BL (Black), BU (Blue), RD (Red), YL (Yellow), GR (Green), or VL (Violet). Add -24 to end of part number for 24 pack convenience package.

^For standard foot lengths other than 3 feet, replace the 3 in the part number with 1 to 20 feet (one foot increments) 25, 30, 35 or 40. For standard colors other than Off White, add suffix BU (Blue), RD (Red), YL (Yellow), or GR (Green) before the Y at the end of the part number. For example, the part number for a blue, CM, Category 6, 5-foot patch cord is UTPSP5BUY.

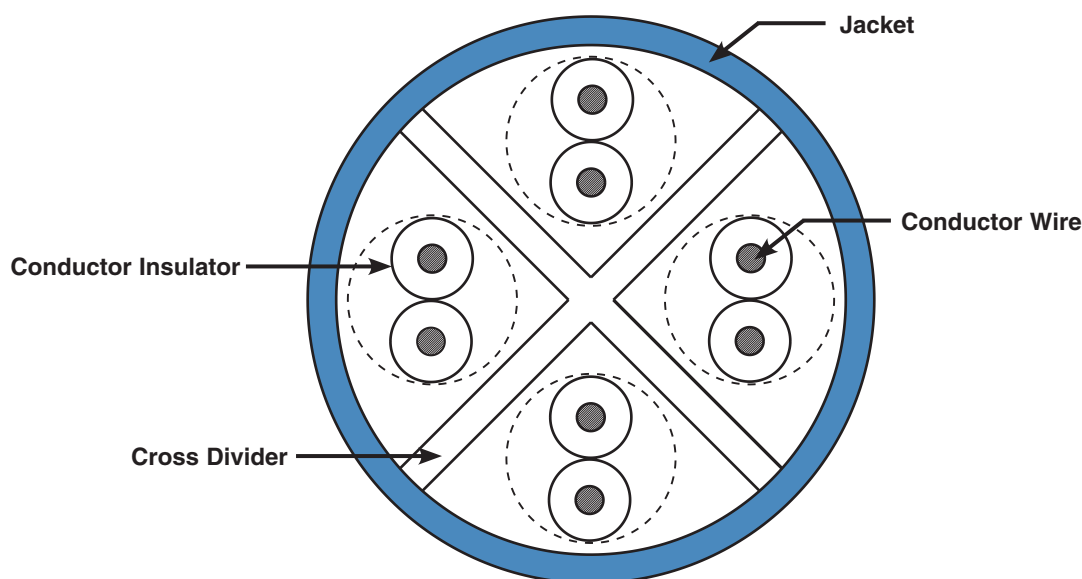
^^For standard meter lengths other than 1 meter, replace the 1 in the part number with 1– 10 meters (one meter increments) 0.5, 1.5, 2.5, 15, or 20. For standard colors other than Off White, add suffix BU (Blue), RD (Red), YL (Yellow), or GR (Green) before Y at the end of the part number. For example, the part number for a blue, CM, Category 6, 5-meter patch cord is UTPSP5MBUY.

TX6™ Category 6 LSZH UTP Copper Cable for EMEA

additional specifications

Mechanical Test	
<i>Ultimate Breaking Strength</i>	>400 N (90 lbf)
<i>Minimum Bend Radius</i>	4 x cable diameter
Electrical Test	
<i>Nominal Velocity of Propagation (NVP)</i>	67%
<i>Operating Voltage, Maximum</i>	80V

cable construction



WORLDWIDE SUBSIDIARIES AND SALES OFFICES

PANDUIT CANADA
Markham, Ontario
cs-cdn@panduit.com
Phone: 800.777.3300

PANDUIT EUROPE LTD.
London, UK
cs-emea@panduit.com
Phone: 44.20.8601.7200

PANDUIT SINGAPORE PTE. LTD.
Republic of Singapore
cs-ap@panduit.com
Phone: 65.6305.7575

PANDUIT JAPAN
Tokyo, Japan
cs-japan@panduit.com
Phone: 81.3.6863.6000

PANDUIT LATIN AMERICA
Guadalajara, Mexico
cs-la@panduit.com
Phone: 52.33.3777.6000

PANDUIT AUSTRALIA PTY. LTD.
Victoria, Australia
cs-aus@panduit.com
Phone: 61.3.9794.9020

For a copy of Panduit product warranties, log on to www.panduit.com/warranty

For more information

Visit us at www.panduit.com

Contact Customer Service by email: cs@panduit.com
or by phone: 800-777-3300

PANDUIT®

©2018 Panduit Corp.
ALL RIGHTS RESERVED.
COSP368--WW-ENG
7/2018