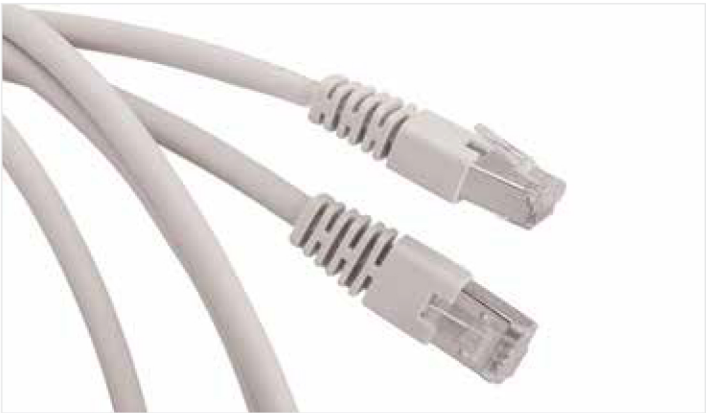


Cat.6_A UTP Copper Patch Cords

Hardware-compliant copper patch cords enable you to complete your network to Cat.6_A according to ANSI/TIA 568-C.2 and Class EA ISO 11801/EN 50173-1. They are constructed with unshielded twisted-pair (UTP) stranded cable, low-smoke, zero-halogen (LSZH™) rated jacket and protected latch to ensure durability. These patch cords are available in a variety of lengths and colours for easy cable management and administration.



Feature	Benefit
“Snagless” boot protects latch	Better mechanical protection helps prevent breaks so the cords last longer
Various lengths and colours	Options to complete systems to your requirements
LSZH cable	Meets flame requirements for low flammability and low toxicity

Specifications	
Standards compliance	ANSI/TIA 568-C.2 ISO/IEC 11801 Edition 2.2 EN 50173-1
Electrical performance Cable impedance Insulation Resistance (500 V) Test Voltage (DC, 1 min) NPV (nominal) Current rating Voltage rating	100 Ω ≥ 500 M Ω/km 100-500 V 78% 1.5A (maximum) 75 V
Environmental compliance Fire performance Operating temperature Transport and storage temperature	IEC 60332-1, IEC 61034-2, IEC 60754-1, IEC 60754-2 20°C to 60°C 0°C to 50°C
Mechanical specifications Cable diameter (OD) Copper diameter Minimum bend radius	5.50 +/- 0.30 (mm) Wire gauge AWG 24 Static bending: 4 x OD Dynamic bending: 8 x OD