

- (15) Accessory plates (K/M) can now be connected to supply cables in the normal manner and fixed to the box flange using fixing screws (F). Fixing screws (F) are supplied fitted to the Outlet Box. They are specially designed to cut through the protective paint finish to provide effective earthing of the accessory mounting plate.
- (16) Ensure when fitting accessory plates the earth link cable from lid (L) is engaged under one of the fixing screws (F).
- (17) Refit the lid by locating hinge link into the moulded carrier and pressing down until fully engaged.
- (18) Check that the lid seats correctly onto the support flange.
- (19) When Concealed Outlet Boxes are used in screeds between 55mm and 63mm thick the use of spacer pattresses (M) is essential to ensure clearance between the back of accessories and the base pan. See chart for dimensional details.

- NB: (1) Due to the elasticity of the ducting it is possible to fix box bases into position and spring ducting into the adaptor.
- (2) If flange trims are not fitted during installation as Note 11 they can be retro-fitted by slackening the nuts (J) by 5-6mm and raising the top pan sufficiently to clip on trims. Retighten the screws.

Guarantee

The company undertakes to replace or repair at its discretion, products should they become defective within 20 years in the case of electromechanical wiring device products, and 10 years in the case of mains related electronic wiring device products, and all circuit protection and cable management products solely as a result of faulty materials or workmanship.

Understandably, if the product has not been installed or maintained in accordance with the Company's instructions, has not been used appropriately, or if any attempt has been made to rectify, dismantle or alter the product in any way, the guarantee will be invalidated.

This Guarantee states the Company's entire liability. It does not extend to cover consequential loss or damage or installation costs arising from the defective product. This guarantee does not restrict or infringe the normal statutory rights or other rights of the consumer.

If you are in any doubt regarding the installation or application of this product please contact:

MK Technical Sales Service

Department telephone: 01268 563720



It's simply safer to say MK™

Caradon MK Electric Ltd.

The Arnold Centre, Paycocke Road, Basildon, Essex, SS14 3EA.

Telephone: 01268 563000 Facsimile: 01268 563563 (UK Sales) Facsimile: 01268 563360 (International)

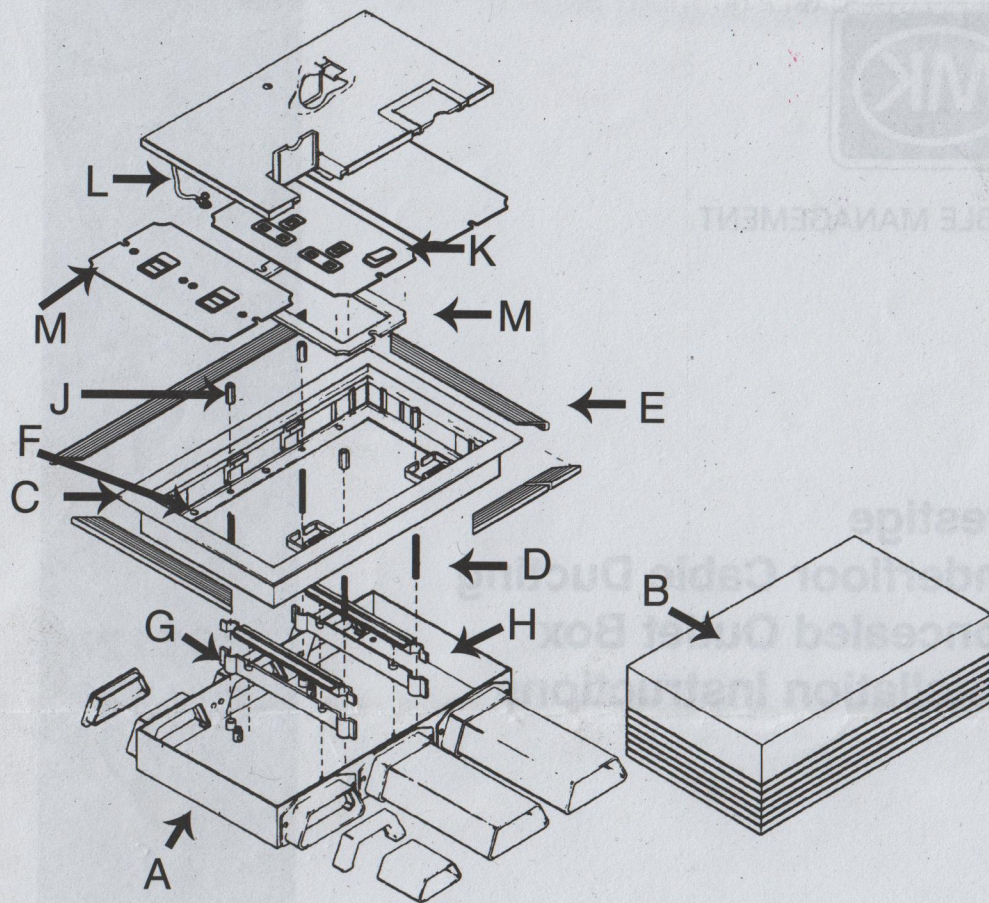
All marks in this document identified with an ® or ™ symbol adjacent to the mark are Trade Marks of Caradon MK Electric Limited



CABLE MANAGEMENT

Prestige Underfloor Cable Ducting Concealed Outlet Box Installation Instructions

**88112/
88113**

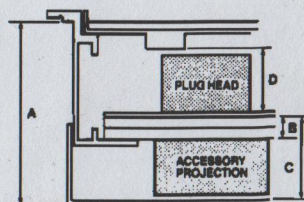


SPACER PATTRESS(ES)

Where Concealed Outlet Boxes are installed in screeds between 55mm and 63mm Spacer Pattresses (M) are required to ensure clearance between the back of an accessory and the base pan.

The Pattress (88008) is a family of three 4mm thick spacers that fit between the top pan (C) and the accessory plate.

Screed Depth	Spacer	Base to Plate (Back Projection)	Plate to Lid (Plug Head)
A	B	C	D
55 - 59mm	8mm(2x4mm)	23.5-27.5mm	21mm
59 - 63mm	4mm(1x4)mm	23.5-27.5mm	25mm
63 - 110mm		23.5-70.5mm	29mm



UNDERFLOOR CABLE DUCTING CONCEALED OUTLET BOX - 88112-88113 INSTALLATION INSTRUCTIONS

A suitable 'Segregator Fixing Kit', size determined by screed depth, must be fitted in conjunction with this underfloor outlet box.

Unpack the Concealed Outlet Box and ensure that it comprises of Base Pan (A), Screeding Block (B) and Top Pan (C). The Top Pan and lid should be returned to its carton and stored in a dry, safe place.

Installation:-

- Locate the Base Pan (A) in its final position on the slab ensuring that it is level and square with the ducting runs.
- Fix the Base Pan to the slab by means of drilled and plugged fixings, shot fixings or a suitable proprietary adhesive.
- Cut ducting to length between boxes, insert ducting into adaptors on fixed Base Pan and locate next box to position as (2).
- Fix ducting to slab using Duct Fixing Clips at 2 metre centres using screws, shot fixings or adhesive.
- Fit screeding block (B) into the Base Pan with the hollow down.
- Check floor finish datum against screeding block height and trim to level using a sharp knife in the appropriate part-cut groove. Ensure that the final level of the screeding block is at or just below finished floor level.
- The screed blocks are removed when the screed is dry by breaking out. Ensure all residue of the blocks are removed.
- Cables and/or draw wires are pulled into the base pans.
- The fixing studs(D) are now located into the threaded bush of the base pan and screwed firmly home.
- The segregator sections (G) are positioned at the fixing stud locations. The lowest segregator is located by two pins into the base pan, upper segregators are alternatively reversed to enclose the fixing studs and are pin and socket connected. Continue building up to segregators to within 10mm of the underside of the bottom flange.
- Any flange trim (E) can be fitted at this stage by clipping the four sections to the flange.
- The top segregator (H) is located to the bottom flange to allow it to slide past the lower segregators.
- The top pan (C) is now positioned into the aperture and located onto the screws ensuring that they project through the lower flange.
- The hexagon nuts (J) are fitted to the projecting studs and drawn down to firmly locate the top pan into the screed base pan.

The area can now be screeded.