

Single-Panel Housing (SPH)

Wall-mountable, holds one CCHE connector panel, black

CORNING

Corning single-panel housing is a cost-effective option for storage, protection and termination of optical fibre cables in applications with minimal mounting space. The housing accepts standard LANscape® solution CCHE connector panels and offers protection for the fibre cable and connectors for indoor wall-mount installations.

This compact unit has a 1.5 inch frontal projection and is optimised for use in locations such as Box-in-a-Box applications, building entrances, terminals, wiring closets, open office and other areas where space is a premium. The SPH-01P housings have a stacking feature to allow up to three independent SPH-01P housings to be stacked and function as one wall-mount unit allowing capacity expansion without consuming additional wall space. The built-in splice tray with routing guides provide both protection and segregation of the cable and fibre during initial install and any future MAC work that is needed. The durable black metal housing can be used for splice management, cross-connect or both for up to 12 single fibre heat-shrink splices, and the improved splice organiser will also handle six ribbon heat-shrink splices if so desired. The single-panel housing can be mounted in multiple orientations including a DIN rail mounting option to allow fibre protection and connectivity in electronic and/or control cabinet applications as well as standard wall mounting.

Features and Benefits

Small wall-mount housing for pre-term or field term

Minimal mounting space required; Box-in-a-Box

Metal housing with smooth, black powder coat finish

Durability with better label adhesion

Stackable

Grow capacity without more wall space

Built in splice tray

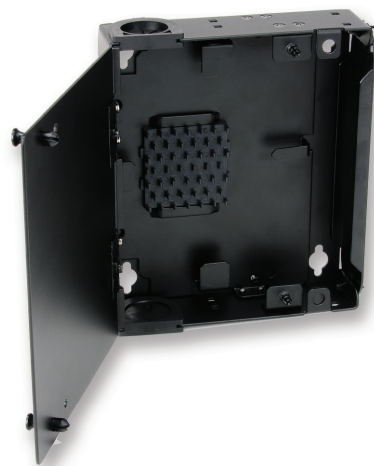
Cable and fibre management; protection

DIN/Hat Rail Mountable

Versatile mounting options

CCH Footprint

Suitable for all CCH adapter panels



Single-Panel Housing | Photo LAN6787



Single-Panel Housing (open) | Photo LAN6767

Standards

RoHS

Free of hazardous substances according to RoHS 2002/95/EG

Single-Panel Housing (SPH)

Wall-mountable, holds one CCHE connector panel, black

CORNING

Specifications

General Specifications

Application	Enterprise Networks
Mounting type	Wall-mount
Product type	Wall-Mountable Hardware

Design - Hardware

Housing colour	black
Housing type	SPH
Number of Panels per Housing	1
Panel or Module Type	CCHE
Splice Tray Options	Includes a 6-slot, 0.4-in splice holder which accommodates up to 12 heat-shrink single splices (double-stacked) and/or six heat-shrink ribbon splices

Mechanical Characteristics

Dimensions (HxWxD)	16 cm x 14 cm x 5 cm (6.3 in x 5.5 in x 2.0 in)
--------------------	---

Ordering Information

Part Number	SPH-01P
Product Description	Single-Panel Housing, wall-mountable, holds 1 CCHE connector panel, black

Shipping Information

Units per delivery	1/1
Packaging Dimensions (W x D x H)	196.85 mm x 171.45 mm x 54.10 mm (7.75 in x 6.75 in x 2.13 in)
Shipping Weight	0.5 kg (1.0 lb)
Package Contents	Housing; installation guide; 6 tie wraps, 1/8 x 4, black; 4 screws, #6-32 x .25 inch; 4 screws, #8-18 x 0.625 inch; and 1 small alcohol wipe for label surface cleaning

Single-Panel Housing (SPH)

Wall-mountable, holds one CCHE connector panel, black

CORNING

Notes



Corning Optical Communications GmbH & Co. KG · Leipziger Strasse 121 · 10117 Berlin, GERMANY

00 800 2676 4641 · FAX: +49 30 5303 2335 · www.corning.com/opcomm/emea

A complete listing of the trademarks of Corning Optical Communications is available at www.corning.com/opcomm/emea/trademarks. Corning Optical Communications is ISO 9001 and ISO 14001 certified. © 2015 Corning Optical Communications. All rights reserved.