

Single-Panel Housing (SPH) Wall-mountable, holds one CCHE connector panel, black

CORNING

**Part Number:
SPH-01P**

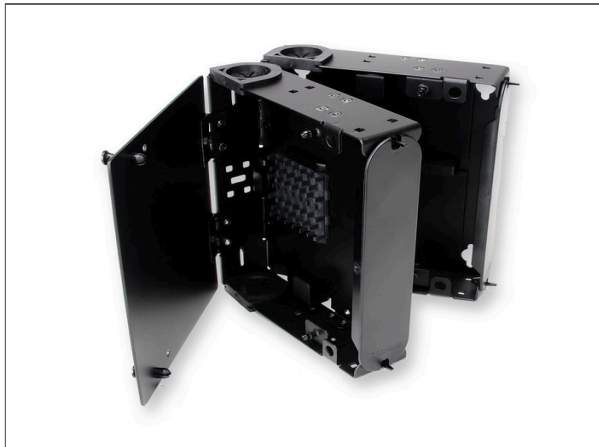
Corning single-panel housing is a cost-effective option for storage, protection and termination of optical fiber cables in applications with minimal mounting space. The housing accepts standard LANscape® solution CCH connector panels and offers protection for the fiber cable and connectors for indoor wall-mount installations.

This compact unit has a 1.5 inch frontal projection and is optimized for use in locations such as Box-in-a-Box applications, building entrances, terminals, wiring closets, open office and other areas where space is a premium. The SPH-01P housings have a stacking feature to allow up to three independent SPH-01P housings to be stacked and function as one wall-mount unit allowing capacity expansion without consuming additional wall space. The built-in splice tray with routing guides provide both protection and segregation of the cable and fiber during initial install and any future MAC work that is needed. The durable black metal housing can be used for splice management, cross-connect or both for up to 12 single fiber heat-shrink splices, and the improved splice organizer will also handle six ribbon heat-shrink splices if so desired. The single-panel housing can be mounted in multiple orientations including a DIN rail mounting option to allow fiber protection and connectivity in electronic and/or control cabinet applications as well as standard wall mounting.

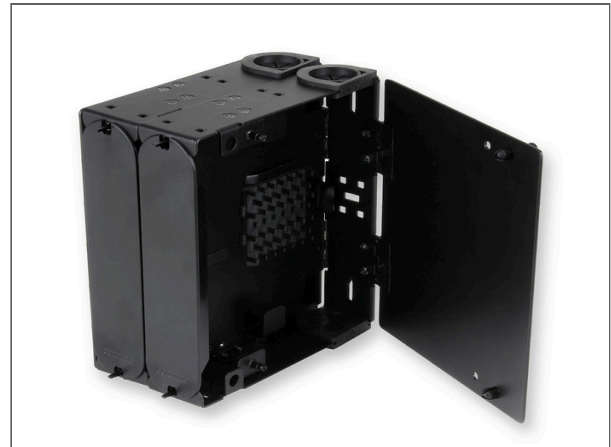


Single-Panel Housing (SPH) Wall-mountable, holds one CCHE connector panel, black

CORNING



Single-Panel Housing, wall-mountable, holds 1 CCHE connector panel, black



Single-Panel Housing, wall-mountable, holds 1 CCHE connector panel, black

Specifications

Design

Number of panels per housing	1
Panel or module type	CCH
Splice Tray Options	Includes a 6 slot 0.4-in splice holder, up to 12 heat-shrink splices double stacked and/or 6 heat-shrink ribbon splices
Housing type	SPH

General Specifications

Mounting Type	Wall-mount
Product type	Wall-Mountable Hardware
Application	Enterprise Networks

Shipping Dimensions

Height	196.85 mm
--------	-----------

Single-Panel Housing (SPH) Wall-mountable, holds one CCHE connector panel, black

CORNING

Shipping Dimensions

Width	171.45 mm
Depth	54.1 mm

Connector Specs

Housing colour	Black
----------------	-------

Ordering Information

Product Number	SPH-01P
EAN Code	4056418142739
Package contents	Housing; installation guide; 6 tie wraps, 1/8 x 4, black; 4 screws, #6-32 x .25 inch; 4 screws, #8-18 x 0.625 inch; and 1 small alcohol wipe for label surface cleaning
Shipping weight	0.5 kg
Units per delivery	1/1

Standards

RoHS	Free of hazardous substances according to RoHS 2011/65/EU
------	-----------------------------------------------------------



Corning Optical Communications GmbH & Co. KG • Leipziger Strasse 121 • 10117 Berlin, Germany
+00 800 2675 4641 • FAX: +49 30 5303 2335 • www.corning.com/opcomm/emea

A complete listing of the trademarks of Corning Optical Communications is available at www.corning.com/opcomm/emea/trademarks. Corning Optical Communications is ISO 9001 and ISO 14001 certified. © 2021 Corning Optical Communications. All rights reserved.