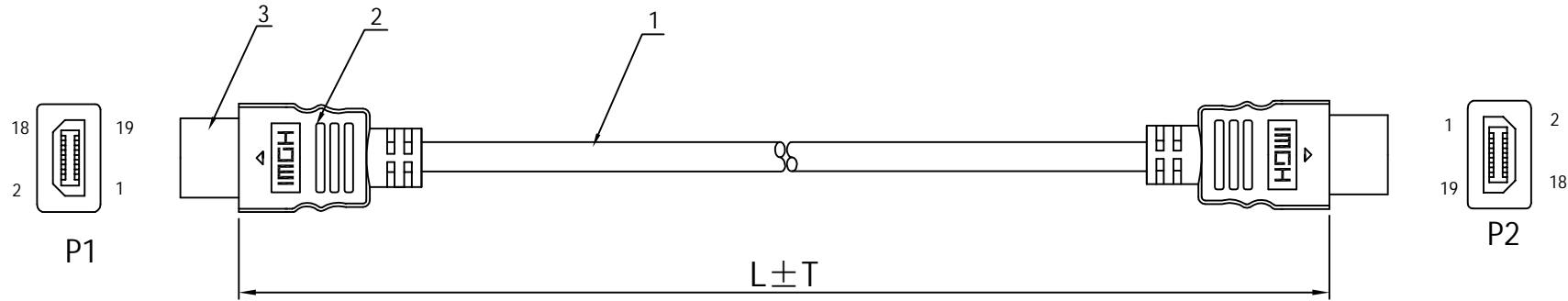


REV	DESCRIPTION
^	



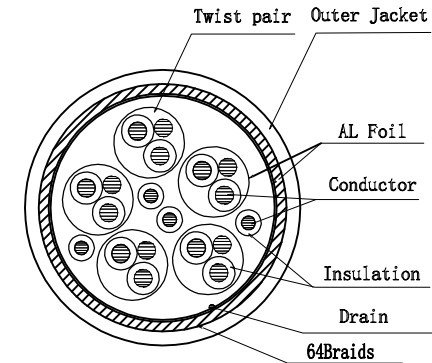
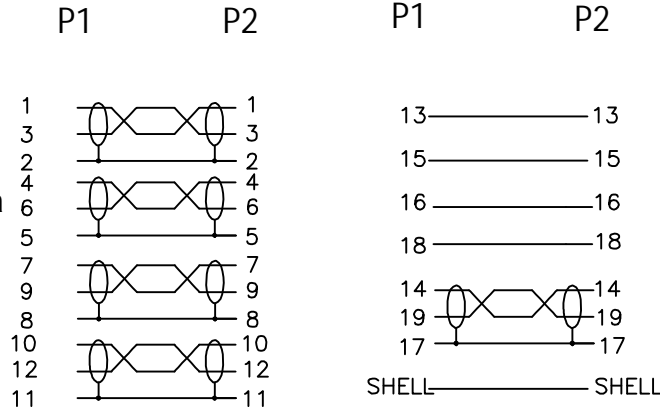
Product family	
L=5M	T=10cm

PIN OUT

CABLE STRUCTURE

NOTE:

1. Rated temperature: 80°C
2. Rated voltage: 30V
3. Reference standard: High-Definition Multimedia Interface Specification Version 2.0
4. Full RoHS compliant
5. 4K@60HZ Resolution Support
6. Bandwidth up to 18Gbps



NO.	PART NO.	PART NAME	MATERIAL	Q' TY	REMARKS
3	COON	IRON PLUG		2	GOLDEN
2	MOLDING	PVC		2	BLACK
1	CABLE	(FPE: 30AWG CCS*1P+30AWGCCS+AL/MY+AL)*5P+PE: 30AWG CCS*4C+AL+30AWG+64ALB+PVC OD6.0MM		1	BLACK

DESCRIPTION		HDMI2.0 CABLE			
PRODUCT NO.					
CONSUMER					
DRAW		DATE	2025/2/10	REV.	A/1
CHECK		SHEET	1/1	UNIT	mm
APP.				SCALE	