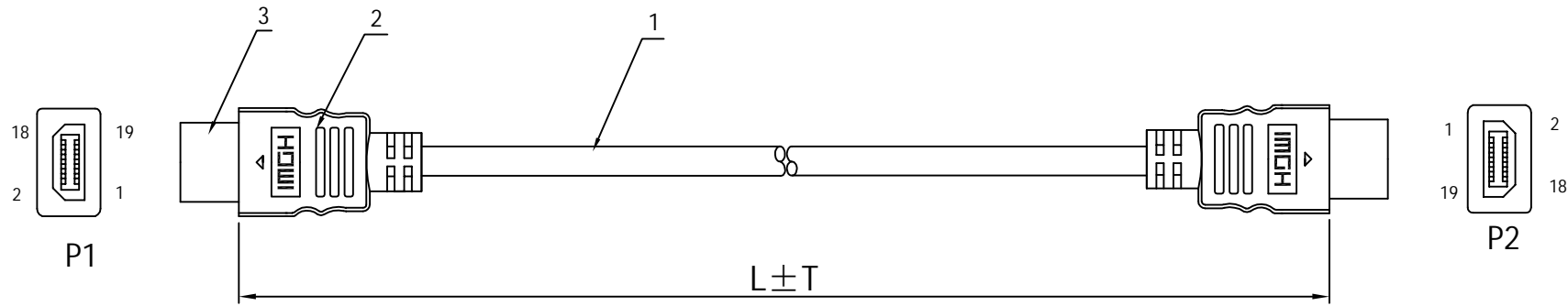


REV	DESCRIPTION
^	



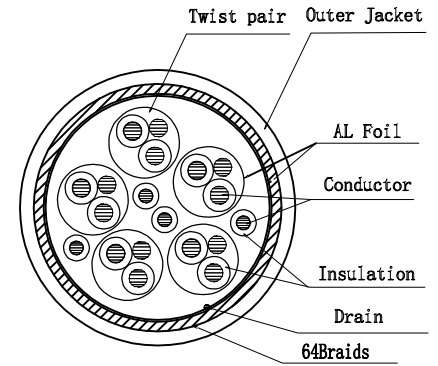
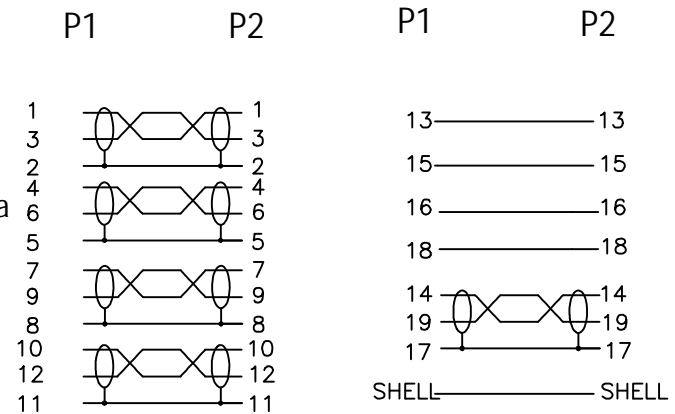
Product family	
L=7M	T=15cm
L=10M	T=15cm

### PIN OUT

### CABLE STRUCTURE

#### NOTE:

1. Rated temperature: 80°C
2. Rated voltage: 30V
3. Reference standard: High-Definition Multimedia Interface Specification Version 2.0
4. Full RoHS compliant
5. 4K@60HZ Resolution Support
6. Bandwidth up to 18Gbps



NO.	PART NO.	PART NAME	MATERIAL	Q' TY	REMARKS
3		COON	IRON PLUG	2	GOLDEN
2		MOLDING	PVC	2	BLACK
1		CABLE	(FPE: 28AWG CCS*1P+30AWGCCS+AL/MY+AL)*5P+PE: 30AWG CCS*4C+AL+30AWG+64ALB+PVC OD7.3MM	1	BLACK

DRAW		DESCRIPTION	HDMI2.0 CABLE			
CHECK		PRODUCT NO.				
APP.		CONSUMER				
		DATE	2025/2/10	REV.	A/1	
		SHEET	1/1	UNIT	mm	SCALE