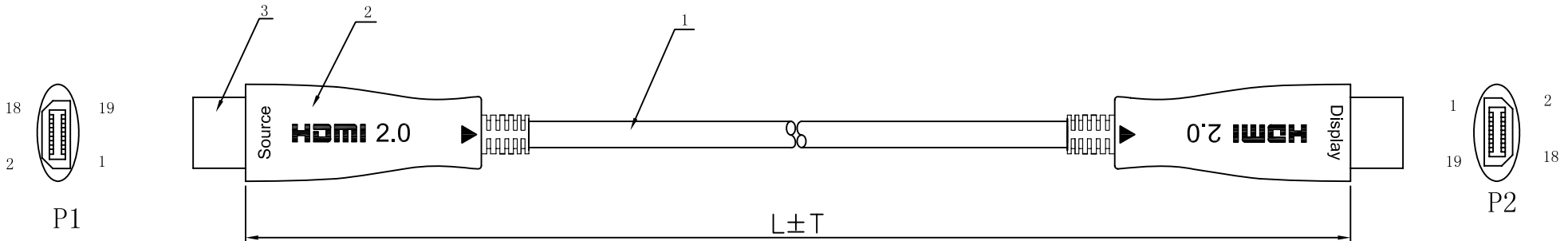
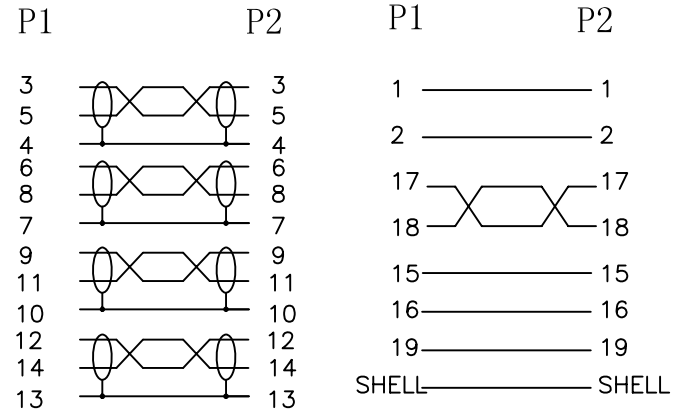


REV	DESCRIPTION
^	

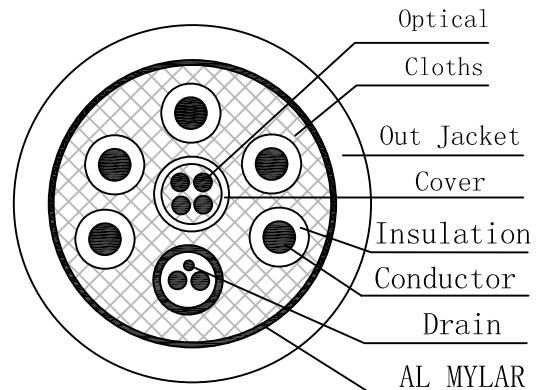


Product family	
L=1m~100m	T=3-50cm

**PIN OUT**



**CABLE STRUCTURE**



**NOTE:**

1. Rated temperature: 80°C
2. Rated voltage: 30V
3. Reference standard: High-Definition Multimedia Interface Specification Version 2.0
4. Full RoHS compliant
5. 3840\*2160@60HZ Resolution Support
6. Bandwidth up to 18Gbps
7. Color Spaces YUV 4:4:4 Support
8. 3D Over HDMI
9. HDCP2.2 Support
10. Both Way EDID Support

		DESCRIPTION		HDMI OPTICAL CABLE			
		PRODUCT NO.					
DRAW		CONSUMER					
CHECK		DATE		2019/6/11	REV.	A/1	
APP.		SHEET 1/1		UNIT	mm	SCALE	

3		COON	IRON PLUG	2	GOLDEN
2		DUST COVER	METAL	2	BLACK
1		CABLE	(2C*30#+DA)+3C*30#+2C*30#+Optical Fibber*4C +FILLER+AL MYLAR OD:4.5MM	1	BLACK
NO.	PART NO.	PART NAME	MATERIAL	Q' TY	REMARKS